

Digital Wallet[®]

Owner's Manual VERSION 2.0

- *Installation Guide*
- *Operational Tips and Care*
- *Interfacing with Your Computer*
- *Operating Menu Options*



©2002 Minds@Work, LLC. MindStor™ and Minds@Work™ are both trademarks of Minds@Work.
All other trademarks and registered trademarks are the property of their respective owners.

Minds@Work LLC
15550 Rockfield Blvd, Suite C, Irvine, CA 92618
Phone: 800-459-5799, 949-707-0600
Technical Support: 866-269-0655, 949-330-3453
E-mail: techsupport@mindsatwork.net
Fax: 949-609-2880
www.mindsatwork.net

TABLE OF CONTENTS

Introduction	1	Download Content (from your Memory Card)	15
Diagrams	3	Display Hard Disk	18
Installation Guide		Display PC Card	20
System Requirements	4	Manage Media	22
Installation Precautions	4	Customize	23
Charging the Battery Pack	5	Updating the Digital Wallet Firmware	28
Installing the Digital Wallet Drivers	6	Support	
Caring for the Digital Wallet		Technical Support	29
Operating Environment	7	After Sales and Replacement Parts	29
Powering the Unit	7	RMA Procedures	30
Care for the LCD Screen	7	Technical Specifications	30
Transfer Process	8	Physical and Environmental Specs	32
Care for Hard Disk	8	One Year Limited Warranty	33
Powering the Digital Wallet		License Agreements	34
Battery Powered	10	FCC Statement	35
AC Adapter Powered	10		
Digital Wallet and Your Computer			
Connecting the Digital Wallet to Your Computer	11		
Disconnecting the Digital Wallet from Your Computer	12		
Using the Digital Wallet as a Card Reader	13		
Operating the Menu Options	14		

INTRODUCTION

Digital Wallet -- Smart Storage on the Go!

Now you can enjoy all the advantages of a high capacity hard drive anywhere you go, any time you want. Powered by Motorola's ColdFire microprocessor, its own operating system, a 3GB, 6GB, 10GB or 20GB 2.5" hard drive, and rechargeable NiMH batteries, the Digital Wallet can download, upload and transport files without using a computer or any external power source.

Folders and files can be downloaded from memory media to the Digital Wallet via a PC card (PCMCIA) adapter.

As an "electronic bridge," the Digital Wallet acts as an interface between your computer and your camera's memory media. Digital camera image folders can be downloaded to the Digital Wallet, freeing up the FLASH memory card so new pictures can be taken.

Just plug the memory media into the appropriate memory media/PC card (PCMCIA) adapter and then insert the card adapter into the PC card slot (PCMCIA) on the Digital Wallet to download or upload data to the memory card.

Please note that the Digital Wallet comes supplied with a CompactFlash Type I PC card adapter. If you want to use another type of memory media, you will need to purchase the appropriate PC card adapter. These PC card adapters can be purchased at local retail stores or through MindsGear, located at www.mindsgear.com.

You can also upload Digital Wallet folders and files to the memory media. When uploading from the Digital Wallet to the memory media, only entire files or folders will be uploaded – if the file or folder is too large for the media's memory capacity, a display will notify you that "There Isn't Enough Memory," and none of the files will be uploaded.

From the Digital Wallet, folders and files can then be downloaded to laptop and desktop computers via a USB connection. The Digital Wallet's hard drive will appear as a removable disk icon on the computer, either on the desktop or in the main directory (usually accessed by Microsoft Explorer on PC platform). After double clicking and opening this removable disk icon, files and folders can be easily dragged-and-dropped back and forth between the computer and the Digital Wallet.

Download, upload, and transport all your files, including business files, PowerPoint presentations, Excel and Word documents, plus computer games, video, movie, MP3, music files and all other high-volume or graphic-intensive files.

With this operation, the Digital Wallet acts as a second or back-up hard drive. The Digital Wallet can also be used as a portable storage device for easily transporting large files.

Unlike most external hard drives, the Digital Wallet is a true plug-and-play solution; its operating system comes pre-installed. Plus, the Digital Wallet can store data from any PC, Macintosh or Linux computer.

Small, lightweight and easy to use, the Digital Wallet is indispensable as a laptop mass storage accessory. Able to function as a self-powered portable mass storage device, the Digital Wallet can also be powered using an AC adapter.

Recharging the batteries takes place while the Digital Wallet is connected to the AC adapter. The recharging process is self-regulating, so there is no need to worry about overcharging the batteries.

Batteries deliver up to 120 minutes of use and can be recharged approximately 500 times in their lifetime, with each recharge taking approximately three hours. Additional battery packs can be purchased for extended independent use.

The Digital Wallet automatically turns itself off after a preset time of inactivity, helping extend battery life. You have the option of adjusting the automatic shut-off delay from disable (always ON) to 20 minutes.

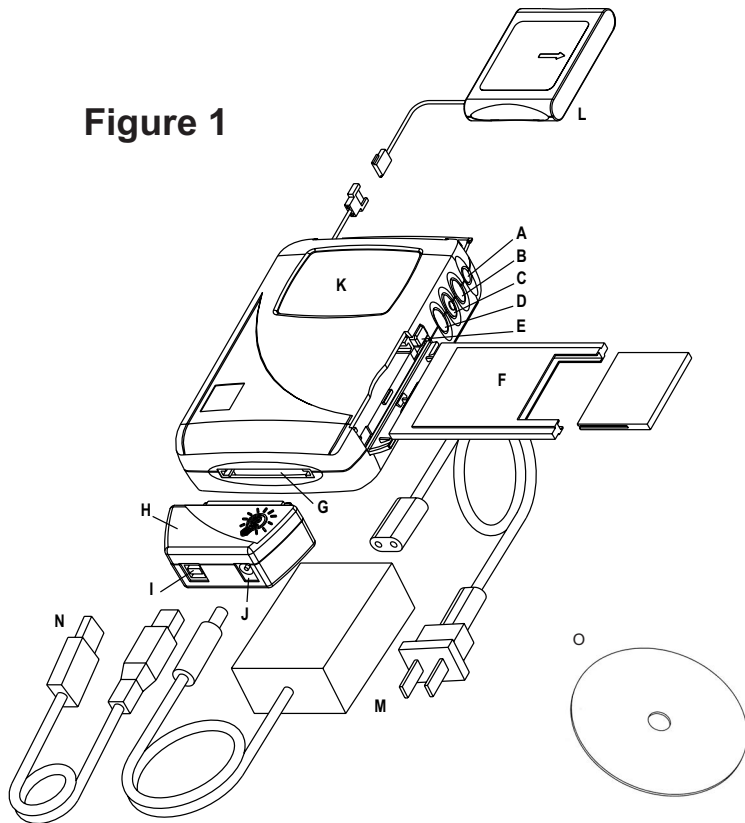
The Digital Wallet comes with a CD containing installation drivers and many useful software applications. The Digital Wallet is also preloaded with files you can use to practice downloading, uploading and viewing from your PC or Mac. All the files can be deleted from the unit.

High capacity, platform, power and computer independent. The Digital Wallet is the ultimate Portable Smart Storage (PSS)TM device when you're on the go.

Designed to be easy to use, the Digital Wallet has three simple function buttons that allow you to navigate and select options from several easy-to-follow menus.

DIAGRAM

Figure 1



- A. Power button
- B. Scroll Up button
- C. Select button
- D. Scroll Down button
- E. PC card (PCMCIA) adapter eject button
- F. CompactFlash PC card (PCMCIA) adapter
- G. Carry Dock port
- H. Carry Dock
- I. USB port
- J. AC adapter jack
- K. LCD screen
- L. NiMH rechargeable battery pack (removable)
- M. AC Adapter / Battery Recharger
- N. USB Cable / Connector
- O. Installation Drivers/Software Applications CD

INSTALLATION GUIDE

This section explains how to get your Digital Wallet up and running.

System Requirements

Operating System:	Windows XP / Windows 2000 / Windows 98 SE & ME / Mac OS 9.0 and higher
Computer Requirements:	200 MHz / 32MB RAM / CD-ROM
Input / Output Interface:	USB Version 1.1 (4-pin) / Memory media/PC card (PCMCIA) adapter / PC card slot (PCMCIA)
Compatible Media: <i>(with appropriate adapter)</i>	Compact Flash™ / SmartMedia™ / IBM® Microdrive™ / Intel® StrataFlash™ / Sony® Memory Stick® / Panasonic® SD Memory Card / MultiMedia Card™

Installation Precautions

- Do not drop, jar, bump, shock the unit, or expose to sources of excessive vibration. Keep in mind that Digital Wallet uses a 2.5” hard drive, similar to those used in laptops. Gently handle and carry your Digital Wallet, especially during data transfers.
- The batteries included are not charged. We recommend charging them fully for at least three hours before using your Digital Wallet prior to its first self-powered use.
- Please close all applications on your computer, prior to installing the Digital Wallet drivers.
- Do not use force when connecting the USB cable. The design of the cable connectors and the Digital Wallet USB port prevent misconnection.
- Do not disconnect Digital Wallet from your computer while the light bulb icon is flashing on the Digital Wallet LCD screen.

First Time Charge of the Battery Pack

1. Open the battery compartment and slide the battery pack in with arrow pointing downwards. (Figure 1)
2. Attach the power lead from the unit to the battery.

NOTE: The power lead connector fits the Digital Wallet connector only one way. Do not force-fit. If the connectors do not fit together easily, be sure they are positioned properly.

3. Close the battery compartment door.
5. Connect the AC Adapter to a power outlet and then to the Carry Dock.
6. Connect the Carry Dock to the Digital Wallet. (Figure 1)
7. Digital Wallet should automatically power on.
8. You will notice the battery level status icon, in the lower left corner of the screen, will be empty. Charge the battery fully for 3 hours prior to first self-powered use.

NOTE: The battery pack cannot be fully charged when it is cold. Charge the battery pack in a temperate zone between 32° and 104° F (0° and 40° C). If recharged above 104° F (40° C), the battery pack could permanently lose its ability to recharge.

Installing the Digital Wallet Drivers

USB CONNECTION FOR WINDOWS XP/2000/ME/98SE

1. Review Installation Precautions. **Do not connect or turn on MindStor until instructed!**

IMPORTANT! Windows 98 SE users must install the most current version of Internet Explorer prior to inserting the MindStor Installation CD.

2. Open your web browser to <http://www.mindsatwork.net/dwdownloads.htm>. Click on the link for the Digital Wallet drivers.
3. Click on the “Install Your Driver” button. The drivers will automatically be installed.
4. When installation is complete, click on “OK”.

CONNECTING TO A MAC VIA USB

1. Review Installation Precautions and turn your Mac personal computer on.
2. Insert AC Adapter into a power outlet and then to the Carry Dock.
3. Connect the USB cable to your Mac and then to the Carry Dock.
4. Connect the Carry Dock to the Digital Wallet.

The Digital Wallet does not need any drivers for Mac. In most instances, the Mac will recognize the Digital Wallet as an “Untitled” drive on the desktop. You may double click on the “Untitled” drive to view the files that we have saved on the Digital Wallet for your enjoyment and viewing. All pre-installed files may be dragged to the Trash for removal.

If you are unable to connect the Digital Wallet to your Mac, in most instances the problem may be solved by updating your USB driver via www.apple.com. For further assistance, refer to Customer Support at: www.mindsatwork.net/systemrequirements.htm.

CARING FOR THE DIGITAL WALLET

This section will cover important tips for everyday use.

Operating Environment

- Place the Digital Wallet in a cool, dry, clean place; away from cold, moisture, dust, windows and heat sources. Do not expose the Digital Wallet to rain or water, to prevent fire or electrical shock.
- If the Digital Wallet has been exposed to extreme temperatures, allow the unit to reach room temperature before use.
- Keep the unit away from sources of moisture or liquids. Do not attempt to clean the drive with chemical solvents, as this might damage the finish. Only use a clean, dry cloth on the outside of the unit.
- Do not drop, jar, bump, shock the unit, or expose to sources of excessive vibration. Keep in mind that the Digital Wallet uses a 2.5" hard drive, similar to those used in laptops. Gently handle and carry your Digital Wallet, especially during data transfers.

Powering the Unit

- Do not subject unit to severe vibration while powering up.
- If unit does not turn on when Power button is depressed, check these suggested solutions:
 - Check power source.
 - Battery is not fully charged—then recharge.
 - Carry Dock is not inserted properly.
 - AC adapter is not fully plugged in or is connected to an inoperable outlet.
 - Battery is not connected.

Care for LCD Screen

- Do not put pressure on the LCD screen.
- Do not worry that the LCD screen backlight is always on; it draws little power.
- Keep the LCD screen from prolonged exposure to sunlight.

Transfer Process

- The countdown status meter displayed during memory card downloads is an estimated amount of the time needed to complete the transfer. File size, manufacture make and fragmentation of the hard disk and memory card can cause transfer time to vary.
- Make sure the memory card is inserted right-side up into the adapter, especially when handling SmartMedia cards.
- Always carefully insert and remove the memory card from the PC card adapter.
- **A flashing light bulb designates that data is in the transfer process. Until the light bulb has ceased to flash, do not:**
 - 1. Disconnect the Digital Wallet from the computer**
 - 2. Remove the PC card adapter from the PC card slot**

If these procedures are not followed, there may be a chance of lost or corrupt data.

- Do not use force when connecting the USB cable. The design of the cable connectors and the Digital Wallet USB port prevents misconnection.

Care for Hard Disk

- If the unit or buttons become inoperable, depress the reset button located on the back of the unit.
- You will find the file “M\$A\$W\$.S\$N” on the Digital Wallet hard disk. This file can be deleted at any time and will not be harmed during reformatting. Being that it is a related operating file, it will always be regenerated once the Digital Wallet is powered on again.
- Check the Minds@Work website periodically for free firmware updates.
- To keep your hard drive in peak operating performance, you are advised to periodically run ScanDisk and Disk Defragmenter (PC users) or reformat the hard drive (Mac & PC users). Without regular maintenance, transfer times will be considerably slower.

PC Users

1. Connect the Digital Wallet to your computer via USB and power the unit.
2. Open Windows Explorer. Right-click once on the “Removable Drive” icon and select “Properties”.
3. Under the “Tools tab”, use the “Error Checking” and “Defragmentation” sections to run ScanDisk and Disk Defragmenter. Please refer to your Windows Owner’s Manual for more detailed information. You are also advised to periodically reformat the Digital Wallet hard drive. When reformatting Digital Wallet, please choose the FAT32 file system.

Mac Users

1. **IMPORTANT!** Back up all your files stored on the Digital Wallet hard disk before reformatting. Reformatting involves erasing the hard disk contents.
2. Connect the Digital Wallet to your computer via USB and power the unit.
3. Highlight the Digital Wallet drive (“Untitled” icon) and click on the “Special” menu at the top of the screen. Select “Erase Disk”.
4. Select “DOS” from the “Menu” drop box. Type in a name for the drive that is no more than eight characters long.
5. Click on “Erase”. Your drive will now be formatted.

IMPORTANT:

1. If “HFS Standard” or “HFS Extended” is chosen, Digital Wallet will be rendered unusable until a DOS format is placed on the drive. You will see the following message on your LCD screen, “Format Disk (14), Press A Key to Exit”.
2. In the case your Mac ever prompts you to “Intialize Disk” and you choose “Continue”, your Digital Wallet hard disk will be reformatted instantly, which involves erasing the hard disk contents and reformatting to HFS Format. **TO PROTECT YOUR FILES, DO NOT CHOOSE “YES” OR “CONTINUE”.**

Battery Powered

1. Depress the Power button to turn the Digital Wallet on. (Figure 1) The screen will show a Minds@Work logo, the Digital Wallet logo and then the Main Menu.
2. To turn off the Digital Wallet depress the Select button while in the Main Menu, and hold down until the units shuts off.

The battery pack will provide up to 100 minutes of use with approximately 500 recharge cycles.

IMPORTANT! Use of any other batteries, battery pack or charging device can cause malfunctions and permanent damage to the Digital Wallet. For additional battery packs, visit www.mindsatwork.net to locate a local or online reseller.

To recharge the battery pack, connect the Digital Wallet to AC power. Each full recharge takes approximately 3 hours.

NOTE: The battery pack cannot be fully charged when it is cold. Charge the battery pack in a temperate zone between 32° and 104°F (0° and 40°C). If recharged above 104° F (40° C), the battery pack could permanently lose its ability to recharge.

To help preserve energy while the Digital Wallet is battery operated, you can customize a preset automatic shut-off timeframe. Please refer to “Shut-off Delay” in the Customize Menu section.

AC Adapter Powered

1. Connect the Carry Dock to the Digital Wallet.
2. Plug the AC adapter to an outlet and then to the Carry Dock. The unit will automatically turn on. While running the unit on AC power, the battery pack will concurrently be charged.
3. To turn off the Digital Wallet, disconnect the AC adapter. Depress the Select button while in the Main Menu, and hold down until the units shuts off.

IMPORTANT! Only use the supplied AC adapter. Use of a non-approved adapter will degrade charge performance and may cause permanent damage to battery and/or unit.

THE DIGITAL WALLET AND YOUR COMPUTER

Connecting the Digital Wallet to Your Computer

In order for your computer to recognize the Digital Wallet, the proper drivers must first be installed. After installation is complete, you can connect to your computer anytime in a few simple steps.

1. Connect the Carry Dock to the Digital Wallet.
2. Connect the USB cable to the computer and then to the Carry Dock.
3. Power on the Digital Wallet, with either battery or AC power.
4. The LCD screen will show a blinking lightbulb to signify the unit is in the process of being recognized by the computer. (Figure 2.A) When the process is complete, the screen will show “USB Connected”. (Figure 2.B) The Digital Wallet will be recognized on Windows as a “Removable Drive” and on Mac as “Untitled”. Double click the icon to view the Digital Wallet directory.

TIP You can perform basic functions such as drag and drop, deleting, copying, cutting and pasting files/folders between the Digital Wallet and the computer. You can also rename any file or folder in the Digital Wallet while it is connected to the computer.

TIP You can easily connect the Digital Wallet to any computer away from home or the office. Visit <http://www.mindsatwork.net/downloads.htm> to download drivers to any computer.

Figure 2.A

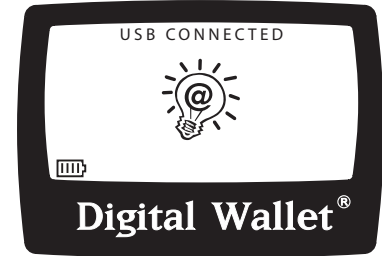
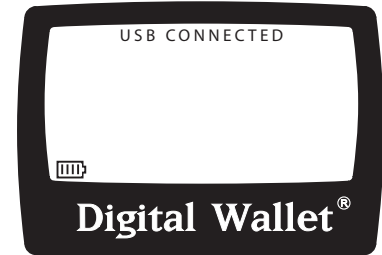


Figure 2.B



Disconnecting the Digital Wallet from Your Computer

DISCONNECTING FROM A PC

Windows 2000/XP: Left-click once on the “Eject Hardware” icon found in the Windows task bar. (Figure 2.C) Highlight and select “Stop Minds@Work Digital Wallet”. Click “OK” on the “Safe to Remove Hardware” window.

Windows 98/ME: Double-click on My Computer. Then right click once on the “Removable Drive” icon and select eject.

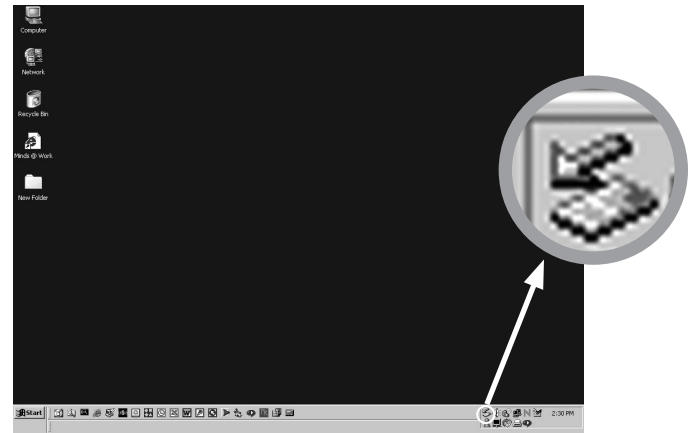
After disconnecting, the Main Menu will automatically be displayed on the LCD screen.

IMPORTANT! On Windows platform, especially when running Windows XP, you must be sure to disconnect Digital Wallet properly, otherwise when you reconnect Digital Wallet your PC will not recognize the drive. In such an event, rebooting the computer may be necessary.

DISCONNECTING FROM A MAC

Drag and drop the “Untitled” hard drive icon into the Trash. The Main Menu should automatically appear on the LCD screen.

Figure 2.C



Using the Digital Wallet as a Card Reader Via USB

*When the Digital Wallet is connected to your computer **via USB**, you can insert an adapter with memory card at any time to use the Digital Wallet as a card reader.*

1. Connect the Carry Dock to the Digital Wallet.
2. Connect the USB cable to the computer and then to the Carry Dock.
3. Power on the Digital Wallet, with either battery or AC power.
4. When the LCD screen displays “USB Connected” without the blinking light bulb, insert a PC card adapter with appropriate memory card within, into the Digital Wallet PC card slot.
5. To recognize the media change, use your mouse to double-click the “Removable Drive” or “Untitled” drive icon on your desktop. Only the memory card contents will now be displayed.
6. When the PC card adapter is ejected, double-click the “Removable Drive” or “Untitled” drive icon to refresh the screen again. Only the Digital Wallet hard disk contents will now be displayed.

NOTE: On Mac OS 10 or higher, the PC card needs to be inserted into the unit prior to USB connection.

OPERATING THE MENU OPTIONS

The three buttons on the side of the Digital Wallet are used to navigate and execute the various functions of the Digital Wallet. (Figure 1.A)

The middle button is used to select an option.

TIP If you hold down the Select button, in any menu or directory, you will be redirected one menu or directory level up in the hierarchy.

The top and bottom buttons are for scrolling up and down through the menu.

The menu options and operation status are displayed on the LCD screen. Beginning with the top-level Main Menu, this section will walk you through the menu operations.

NOTE: These operations cannot be used if the Digital Wallet is connected to USB.

The Main Menu is the first list of options that appears when you turn on the Digital Wallet, as shown right. (Figure 3.A)

Figure 3.A



Download Content

Downloading Content from your Memory Card

The “Download Content” function is used to download the complete contents of your memory card. (To download individual files from your memory card, please refer to the section covering the “Display PC Card” function.) The Digital Wallet is compatible with the following memory cards:

- CompactFlash
- SmartMedia
- MultiMedia Card
- IBM Microdrive
- Intel StrataFlash
- Sony Memory Stick
- Panasonic SD Memory Card

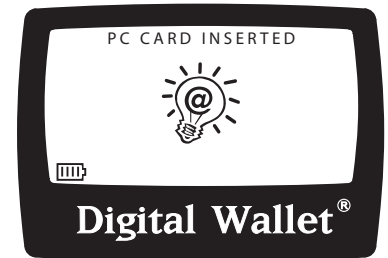
IMPORTANT! For each type of memory card, you will need to use the corresponding adapter. Adapters are available for purchase at your local electronics store or online at www.mindsgear.com.

Do Not Power On The Digital Wallet Until Instructed! To download from these memory cards:

1. Insert memory card into appropriate PC card adapter. Then, fully insert the adapter into the PC card slot. (Figure 1)
2. Power on the Digital Wallet with battery or AC power. The screen will show a flashing light bulb, signifying the memory card is being recognized. (Figure 3.B)

IMPORTANT! Always take special care with the adapter when inserting and removing your memory card. Never force-fit the media or the adapter. Do not insert card bus, PC (PCMCIA) modems, ethernet cards, FireWire or game cards.

Figure 3.B



3. Highlight “Download Content” (Figure 3.A) and press the Select button. The Digital Wallet will begin to download the entire contents of the memory card. The status screen will indicate the download time remaining. (Figure 3.C) You have the option to press any key to stop download. If you stop the download process, the display will prompt you to confirm if you want to abort the process. Pressing Select will abort and pressing the Up or Down button will continue the download. (Figure 3.D)

ERROR READING! If the Digital Wallet determines that a file on the memory card cannot be copied, you will be notified of the specific file and prompted whether to skip the file and continue download (press Select for yes) or to abort the download process (press Up or Down for no).

4. Once download is complete, the Digital Wallet will perform an automatic verification that the files have been transferred. (Figure 3.E)

Figure 3.C



Figure 3.D



Figure 3.E



5. When verification has completed, the Digital Wallet will display the folder name of the downloaded content, the folder size and the status of the operation. All sets of files downloaded from the memory card to the Digital Wallet are stored on the Digital Wallet as numbered folders, starting with DW000001.(Figure 3.F)

If the download failed, the screen will say “Failed!” instead of “Successful”. You may want to re-attempt the download or try downloading the files individually. See Display PC Card.

6. Press any key to exit.
7. To eject the PC card adapter, push down on the eject button.

IMPORTANT! When data is downloaded from memory card to the Digital Wallet, the data still remains on the memory card as well. To delete data from the memory card, please refer to the section covering the “Manage Media” function or delete data via the original input device (e.g., a digital camera), using the device’s delete function. We recommend formatting of the card upon completion of download to the Digital Wallet.

Figure 3.F



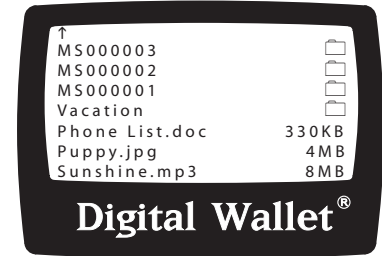
Display Hard Disk

The “Display Hard Disk” function lets you explore the contents of the hard drive, using the up and down navigation buttons.

Highlight and select “Display Hard Disk”. (Figure 3.A) A directory of folders and files will be displayed (Figure 3.G) in the following sorting order: 1. ”DW#####” folders listed in descending order, 2. Remaining folders alphabetically listed, 3. Files alphabetically listed.

When a folder or file is highlighted, the selection begins to scroll left. A highlighted folder will show the complete folder name, a folder icon and the date created. The date of the folder is created based on the date of the most current file it contains. A highlighted file will show the complete file name, the file size and the date of the file.

Figure 3.G



WORKING WITH FOLDERS

When you select a folder, the following option menu will appear. (Figure 3.H)

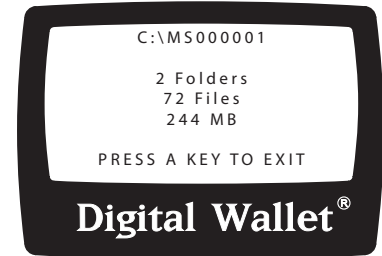
Open Folder—Selecting this option will display the contents of the folder. To navigate back up a level in the directory, select the Up Arrow icon ↑.

Show Information—When this option is selected, then Digital Wallet will display the folder properties: name of the folder, number of folders contained within, number of files contained within, and the folder size. (Figure 4.I)

Figure 3.H



Figure 3.I



Upload to Card—Uploads entire contents of folder to memory card. If a PC card adapter with memory card is already inserted into the Digital Wallet, the screen will verify that sufficient storage space is available and then prompt you to confirm the upload process or cancel. (Figure 3.J) If there is no PC card adapter inserted, the screen will prompt you to do so first.

When a folder of the same name exists on the memory card, the Digital Wallet will prompt you to confirm “Override” or not. Push select to “Override” the existing folder, or Up/Down for no.

Delete—Deletes entire folder and contents.

Exit—Takes you back to the previous file directory.

WORKING WITH FILES

When you select a file from the directory, the following option menu will appear. (Figure 3.K)

Open File—Select this option to open text files for viewing. All other files will display a blank screen.

Upload to Card—Uploads file to memory card. If a PC card adapter with memory card is already inserted into the Digital Wallet, the screen will verify that sufficient storage space is available and then prompt you to confirm the upload process or cancel. If there is no PC card adapter inserted, the screen will prompt you to do so first.

When a file of the same name exists on the memory card, the Digital Wallet will prompt you to confirm “Override” or not. Push select to “Override” the existing file, or Up/Down for no.

Delete—Deletes file.

Exit—Takes you back to the previous file directory.

Figure 3.J



Figure 3.K



Display PC Card

The “Display PC Card” function lets you explore the contents of an inserted memory card, using the up and down navigation buttons.

Highlight and select “Display PC Card”. (Figure 3.A) A directory of folders and files will be displayed (Figure 3.L) in the following sorting order: 1. ”DW#####” folders listed in descending order, 2. Remaining folders alphabetically listed, 3. Files alphabetically listed.

When a folder or file is highlighted, the selection begins to scroll. A highlighted folder will show the complete folder name, a folder icon and the date created. A highlighted file will show the complete file name, file size and file date.

WORKING WITH FOLDERS

When you select a folder, the following option menu will appear. (Figure 3.M)

Open Folder—Selecting this option will display the contents of the folder. To navigate back up a level in the directory, select the Up Arrow icon ↑.

Show Information—When this option is selected, the Digital Wallet will display the folder properties: name of the folder, number of folders contained within, number of files contained within, and the folder size.

Download to Disk—Uploads entire contents of folder to hard drive. The screen will prompt you to confirm download process or cancel.

When a folder of the same name exists on the memory card, the Digital Wallet will prompt you to confirm “Override” or not. Push select to “Override” the existing folder, or Up/Down for no.

Figure 3.L



Figure 3.M



Delete—Deletes entire folder and contents.

Exit—Takes you back to the Main Menu.

WORKING WITH FILES

When you select a file, the following option menu will appear. (Figure 3.N)

Open File—Select this option to open text files for viewing. All other files will display a blank screen.

Download to Disk—Uploads file to hard drive. The screen will prompt you to confirm download process or cancel.

When a file of the same name exists on the memory card, the Digital Wallet will prompt you to confirm “Override” or not. Push select to “Override” the existing file, or Up/Down for no.

Delete—Deletes file.

NOTE: Some digital cameras use index files to keep track of the number of pictures contained in the memory card (Example: Figure 3.L, “CAMERA001.DSC”). If you have deleted any image files on the memory card, delete the index file before reinserting the memory card into your digital camera. Please refer to your digital camera owner’s manual for more information on the index file.

Exit—Takes you back to the Main Menu.

Figure 3.N



Manage Media

The Digital Wallet is capable of determining free space available on your hard drive and memory media. You can also delete the entire contents of your memory media from this menu.

Highlight and select “Manage Media”. (Figure 3.A) The following option menu will appear. (Figure 3.O)

Check Disk Space—After selecting this option, your Digital Wallet will check the amount of free space available on the hard drive. (Figure 3.P) The results will show as a percentage available and as MB available. (Figure 3.Q)

Check PC Card Space—After selecting this option, the Digital Wallet will check the amount of free space available on the memory media inserted. If there is no memory media inserted, the screen will prompt you to do so. The results will show as a percentage available and as MB available.

Erase PC Card—This option will delete the entire contents of the memory card that is currently inserted. The screen will prompt you to confirm the delete process or cancel. Once the files are deleted, they cannot be recovered at a later date.

Exit—Takes you back to the Main Menu.

Figure 3.O

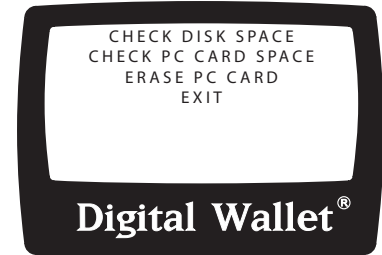


Figure 3.P



Figure 3.Q



Customize Menu

The “Customize” Menu gives you added versatility, security and status information about your Digital Wallet.

Highlight and select “Customize”. (Figure 3.A) The following option menu will appear. (Figure 3.R)

SET CONTRAST

Sets the contrast of the backlit LCD screen.

1. Highlight and select “Set Contrast”.
2. A new option menu will be displayed. Using the Up/Down and Select buttons, increase or decrease the contrast until you are satisfied with the display. (Figure 3.S)
3. Highlight and select “Exit” to return to the “Customize” Menu.

Figure 3.R



Figure 3.S



SHUTOFF DELAY

You may designate your preferred auto shutoff delay time with this menu option. The factory default shutoff delay is set at 3 minutes. This means that after 3 minutes of inactivity, your Digital Wallet will automatically shut off. This feature helps to preserve your battery life.

IMPORTANT! The auto shutoff delay feature is not activated when the Digital Wallet is connected to AC power.

1. Highlight and select “Shutoff Delay”.
2. The display will read “Auto Shutoff, 3 minutes”. (Figure 3.T) Using the Up/Down buttons, select your preferred auto shutoff delay time. You may also select to disable the auto shutoff delay by decreasing the value below “30 seconds” to read “Disabled”.

NOTE: When auto shutoff delay is disabled, the Digital Wallet will remain on until the unit is manually turned off or the battery is dead. If the battery is dead, it will then need to be recharged.

3. To exit, press the Select button and you will be returned to the “Customize” Menu.

Figure 3.T



CHOOSE LANGUAGE

You may choose to have the LCD display text of another language. Currently, English, German, Italian, Spanish and French are available. Periodically check www.mindsatwork.net for additional language updates.

1. Highlight and select “Choose Language”.
2. Scroll up and down to highlight your desired language. (Figure 3.U)
3. Press the Select button and you will be returned to the “Customize” Menu.

NOTE: If the unit is set to a language other than your preferred language:

1. Shut the unit off and then Power it on again.
2. When the Main Menu appears, press the up button once to reach the “Customize” option. Press the Select button.
3. Use the Up/Down buttons to highlight your preferred language and then press Select.

Figure 3.U



SET/CLEAR PASSWORD

When set, this security feature keeps your data safe from others.

IMPORTANT! When set, the password is active immediately. The next time you power on the Digital Wallet, you will be required to enter the new password. You may clear and change your password at any time, once you gain access to the Digital Wallet with the password. **DO NOT FORGET YOUR PASSWORD.**

Setting Initial Password

1. Highlight and select “Set/Clear Password”.
2. In the next screen, you will be prompted to enter four digits. (Figure 3.V)
Using the Up/Down buttons, choose the first number desired in your password. Then press the Select button.
3. Repeat Step 2 for the next three digits. After the last digit is selected, you will be returned to the “Customize” Menu.

NOTE: When password has been set, upon powering on the Digital Wallet you will be prompted to enter the password. Without the password, the functions, menus and file directory cannot be accessed.

Clear Password—To clear a password that has been set:

1. Highlight and select “Set/Clear Password”. You will be prompted with the Password Menu. (Figure 3.W)
2. Highlight and select “Clear Password”. The password will be cleared and you will be returned to the “Customize” Menu.

Figure 3.V

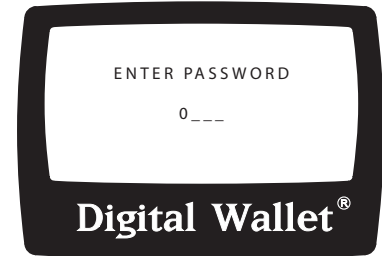


Figure 3.W



Change Password—To change a password that has been set:

1. Highlight and select “Set/Clear Password”.
2. Highlight and select “Change Password”. (Figure 3.W)
3. In the next screen, you will be prompted to enter four digits. Using the Up/Down buttons, choose the first number desired in your password. Then press the Select button.
4. Repeat Step 2 for the next three digits. After the last digit is selected, you will be returned to the “Customize” Menu.

FORGOTTEN PASSWORD If you have forgotten your password and are locked out from accessing your data, call Minds@Work technical support to obtain a solution password to unlock your Digital Wallet. Please have your Digital Wallet serial number handy before calling.

VERSION

Upon selecting Version from the “Customize” Menu, the display will show you what version of firmware your Digital Wallet is running. (Figure 3.X) Please check www.mindsatwork.net for new firmware upgrades that can be easily downloaded to the Digital Wallet.

Figure 3.X



UPDATING THE DIGITAL WALLET FIRMWARE

We are always adding new features and enhancements to the Digital Wallet. Check www.mindsatwork.net periodically for new firmware updates.

1. Connect Digital Wallet to your computer and power on with AC Adapter.
2. Visit <http://www.mindsatwork.net/msdownloads.htm>.
3. Download the firmware update to your Digital Wallet hard disk. The file name will be M\$A\$W.M\$\$. **Do not place this file in any folder.** If your computer prompts you to confirm whether or not to replace the existing file, select “Yes”.
4. Eject the Digital Wallet drive and disconnect the USB cable. In the Main Menu, select “Check Hard Disk” to check that the file “M\$A\$W.M\$\$” is in the directory.
5. Disconnect the AC Adapter and completely Power off the unit. **This order of operations must be followed exactly in order for the update to take effect.**
6. Plug the AC Adapter back in. **(This operation must be done under AC Power.)** Be sure the USB cable is not connected to the Carry Dock. The Minds@Work Logo will appear, followed by the Digital Wallet logo. The unit will show these two screens twice, signifying the update is taking place.
7. When the Main Menu appears, scroll down to “CUSTOMIZE” and press Select. (Figure 3.A)
8. In the next menu, scroll down to “VERSION” and press Select. (Figure 3.X) Check the version number to verify that your firmware was updated with the latest version. You have completed the update.

NOTE: If the update was successful, your hard disk directory will no longer show the file M\$A\$W.M\$\$.

SUPPORT

Technical Support

Digital Wallet technical support is available:

Monday - Friday 8:00 a.m. - 5:00 p.m. PST

Service is not available on Saturdays, Sundays and six legally observed United States holidays:

New Year's Day	Independence Day	Thanksgiving Day
Memorial Day	Labor Day	Christmas Day

For toll free technical support within the United States, call: 866-269-0655

For technical support outside of the United States, call: 949-330-3453

Or e-mail us at: technicalsupport@mindsatwork.net

After Sale and Replacement Parts

The Digital Wallet provides easy sourcing for several after sale products and replacement parts. Contact Minds@Work at 800-459-5799 or visit our Web site, www.mindsatwork.net. You may write us at 15550 Rockfield Boulevard, Suite C, Irvine, CA 92618. Also go to www.mindsgear.com to purchase after market products, replacement parts and accessories. Contact us today for pricing and availability on:

Camera Memory Media / PCMCIA Card Adapter
Carry Dock / Charger
Digital Wallet Carrying Case

USB Cable / Connector
NiMH Rechargeable Battery Pack
AC Adapter / Battery Recharger

RMA Procedures

For replacement or return, contact Minds@Work at www.mindsatwork.net. Or contact technical support at 866-269-0655 within the United States and 949-330-3453 internationally to obtain a RMA (Return Merchandise Authorization) number. No product will be accepted without a valid RMA number.

Technical Specifications

Processor	RISC Processor
Storage	Available in 3GB, 6GB, 10GB and 20GB models
Status Display	Backlit monochrome matrix LCD (no picture preview)
Power	90-240V (50-60Hz) Worldwide AC Adapter
Batteries	Rechargeable and replaceable NiMH Batteries
Battery Life	500 recharge cycles
Operating Life	100 minutes average use
Operating Temp	30° - 104°F, 0° - 40°C
Recharging	3-hour recharge time. Recharging occurs via AC adapter connection to Carry Dock and Digital Wallet. Batteries have no memory retention.
OS Support	Windows XP, Windows 2000, Windows 98, Windows SE, Windows ME and Mac 9.0+
Interface	USB 1.1 (4 pin)

Data Transfer	Average 600-800 KB/sec. (USB)	
Rotational Speed	4200rpm	
Seek Time	Track-to-track 3ms, Average 13ms, Maximum 25ms	
Average Latency	7.14ms	
Buffer	512KB	
MTTF (Power on Hours)	300,000	
Operating Voltage	5V low self discharge rate	
Worldwide AC Adapter	Input:	90-240V~50-60Hz
	Output:	9.6V 1100mA Class II Transformer UL Approved
Camera Memory Card Compatibility	CompactFlash	IBM Microdrive
	SmartMedia	Intel StrataFlash
	Sony Memory Stick	MultiMedia Card
	Panasonic SD Memory Card	

Physical and Environmental Specs

Dimensions	5.6" x 3.0" x 1.2" 142.2mm x 76.2mm x 30.5mm
Weight	11.5 oz. (345 gms.) with batteries
Ambient Temperature	Operating: 32° - 120°F, 0° - 50°C Non-operating: 15° - 140°F, -10° - 60°C
Humidity	80% RH Noncondensing
Vibration and Shock	Operating Vibration: 1.0G Operating Shock: 150G Non-operating Shock: 700G
Altitude	10,000 feet (3,048 meters)

FCC and CE approved for home and office use.

All software and hardware products and specifications are subject to change without notice. For current availability, contact www.mindsatwork.net.

Limited One Year Warranty

Limited Warranty. Minds@Work warranties the software and hardware products furnished herewith to be free from defects in materials and workmanship under normal use for the period of one year from the date of delivery to you, as evidenced by your receipt. This warranty is limited to the original purchaser and is not transferable.

Extended Warranty. To acquire an extended warranty, contact Minds@Work regarding fees, terms and conditions at www.mindsatwork.net. Or write to Minds@Work at 15550 Rockfield Boulevard Suite C, Irvine, CA, 92618.

Customer Remedies. Minds@Work's entire liability and your exclusive remedy shall be, at Minds@Work's options, either (a) return of the price paid, or (b) repair or replacement of the software or hardware that does not meet Minds@Work's Limited Warranty, and which is returned to Minds@Work with your original receipt. This Limited Warranty is void if failure of the software or hardware has resulted from accident, abuse or misapplication. Any replacement software or hardware will be warranted for the remainder of the original warranty period or 30 days, whichever is longer.

No Other Warranty. Minds@Work disclaims all other warranties, either expressed or implied, including, but not limited to: implied warranties or merchantability and fitness for a particular purpose, with respect to the software, hardware and any accompanying written materials.

No Liability or Consequential Damages. In no event shall Minds@Work or its suppliers be liable for any damages whatsoever (including, without limitation, damages for loss of business profits, business interruption or other data loss) arising out of, or through an inability to use this Minds@Work product, even if Minds@Work has been advised of the possibility of damage.

This agreement is governed by the laws of the United States of America.

Contact our Technical Support Hotline at: Toll-free in the United States 866-269-0655; International calls 949-330-3453.

For more information about this License Agreement, contact: Minds@Work's Web site at www.mindsatwork.net or write to Minds@Work at 15550 Rockfield Boulevard, Suite C, Irvine, CA 92618 to locate the Digital Wallet dealer nearest you. Warranty coverage requires proof of purchase documentation evidencing the identity of the original purchaser and the purchase price (sales receipt or invoice).

License Agreements

Minds@Work Software License Agreements

PROOF OF LICENSE

Single User License

This is a legal agreement between you (either an individual or an entity), the User, and Minds@Work. Please review the following terms and conditions carefully before opening the disk packaging. By opening this disk package, you are agreeing to be bound by the terms of this agreement. If you do not agree to the terms of this agreement, promptly return the disk package and the accompanying items to the place from which you obtained them for a full refund.

1. **Grant Of License.** Minds@Work grants you the right to one copy of the enclosed Minds@Work software program(s) (the “SOFTWARE”) on a single computer, provided the SOFTWARE is in use on only one computer at any time. The SOFTWARE is “in use” on a computer when it is loaded into the temporary memory or is installed into the permanent memory of that computer. In the case that the SOFTWARE is installed on a computer which is connected to other computers (e.g., with a network), you must have a reasonable mechanism or process in place to assure that the number of persons using the SOFTWARE concurrently does not exceed the number of licenses you own.
2. **Copyright.** The SOFTWARE is owned by Minds@Work and is protected by copyright laws and international treaty provisions. Therefore, you must treat the SOFTWARE like any other copyrighted material (e.g., book or musical recording), except that you may either (a) make a single copy of the SOFTWARE solely for backup for archival purposes, or (b) transfer the SOFTWARE to a permanent memory (e.g., hard disk) provided that only one copy of the SOFTWARE is used at any time. You may not copy the written materials accompanying the SOFTWARE.
3. **Other Restrictions.** This Minds@Work Software License Agreement is your proof of license to exercise the rights granted herein and must be retained by you. You must not rent or lease this SOFTWARE. You may transfer the SOFTWARE and accompanying written materials on a permanent basis, provided you retain no copies and the recipient agrees to the terms and conditions of this agreement. Any transfer of the SOFTWARE must include the most recent update and all prior versions.

FCC Statement

Instructions to the User. This equipment has been tested and found to comply with the limits for a class B digital device, pursuant to part 15 of the FCC Rules. These limits are designed to provide reasonable protection against harmful interference in a residential installation. This equipment generates, uses and can radiate radio frequency energy and if not installed and used in accordance with the instructions, may cause harmful interference to radio communications. However, there is no guarantee that interference will not occur in a particular installation. If this equipment does cause harmful interference to radio or television reception, which can be determined by turning the equipment off and on, the user is encouraged to try to correct the interference by one or more of the following measures:

- Reorient or relocate the receiving antenna.
- Increase the separation between the equipment and receiver.
- Connect the equipment into an outlet on a circuit different from that to which the receiver is connected.
- Consult the dealer or an experienced radio/TV technician for help.

In order to maintain compliance with FCC regulations, shielded cables must be used with this equipment. Operation with non-approved equipment or unshielded cables is likely to result in interference to radio and TV reception. The user is cautioned that changes and modifications made to the equipment without the approval of manufacturer could void the user's authority to operate this equipment.